

# EDIUS 7 Setup Instruction

## for working with 3<sup>rd</sup> party Hardware

This instruction navigates how to setup EDIUS 7 to work with below 3<sup>rd</sup> party hardware:

- AJA Hardware
- Blackmagic Design Hardware
- Matrox Hardware

### AJA Hardware

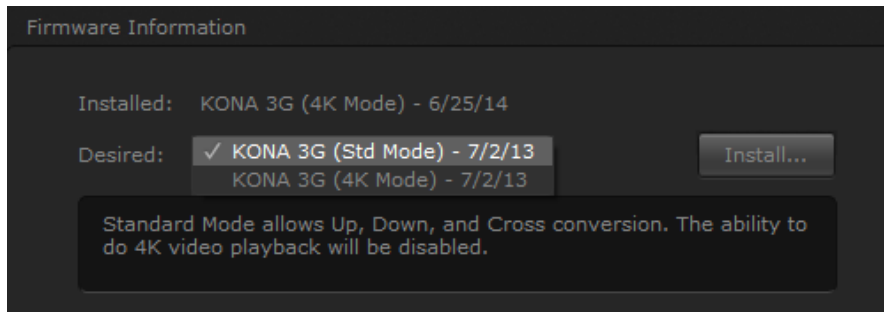
#### Preparation

Install the AJA Win Drivers v10.5.1 software and confirm that your AJA hardware works properly.

#### Switching working mode (only KONA 3G card)

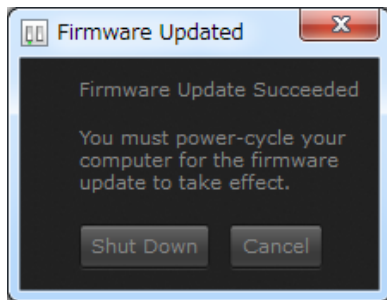
You need to switch working mode in AJA Control Panel due to 4K or standard mode:

- 1) Quit EDIUS if running.
- 2) Choose [Start] > [All Programs] > [AJA] > [AJA Control Panel].
- 3) AJA Control Panel will appear. Choose [Firmware] in the left-pane.
- 4) Choose desired mode from the list then click [Install] button.



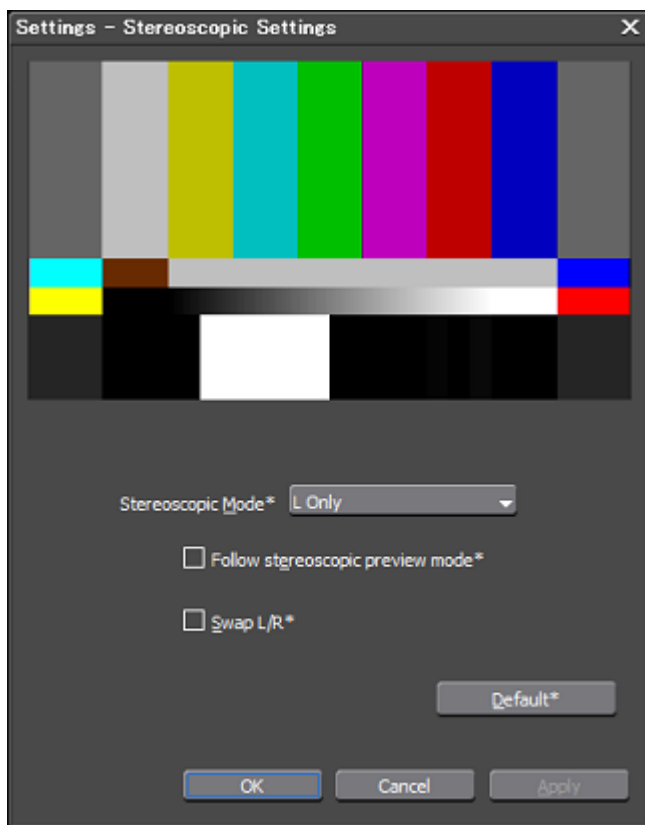
- 5) Selected firmware will be programmed. Do NOT quit AJA Control Panel or turn off the computer during programming the firmware.
- 6) Once programming the firmware succeeded, below dialog will appear. Please click [Shutdown] button.

*NOTE: If you click [Cancel] button, please shutdown then restart the computer. AJA KONA 3G card will not work by programmed firmware until shutdown then restarting the computer.*



## Configuring preview device

- 1) Choose [Settings] > [System Settings].
- 2) System settings window will appear. Choose [Hardware] > [Preview Device] in the left-pane.
- 3) Check installed AJA hardware then click [...] button.
- 4) Configuration dialog for stereoscopic editing will appear. Configure the settings.



- 5) Click [Apply] then [OK] button.

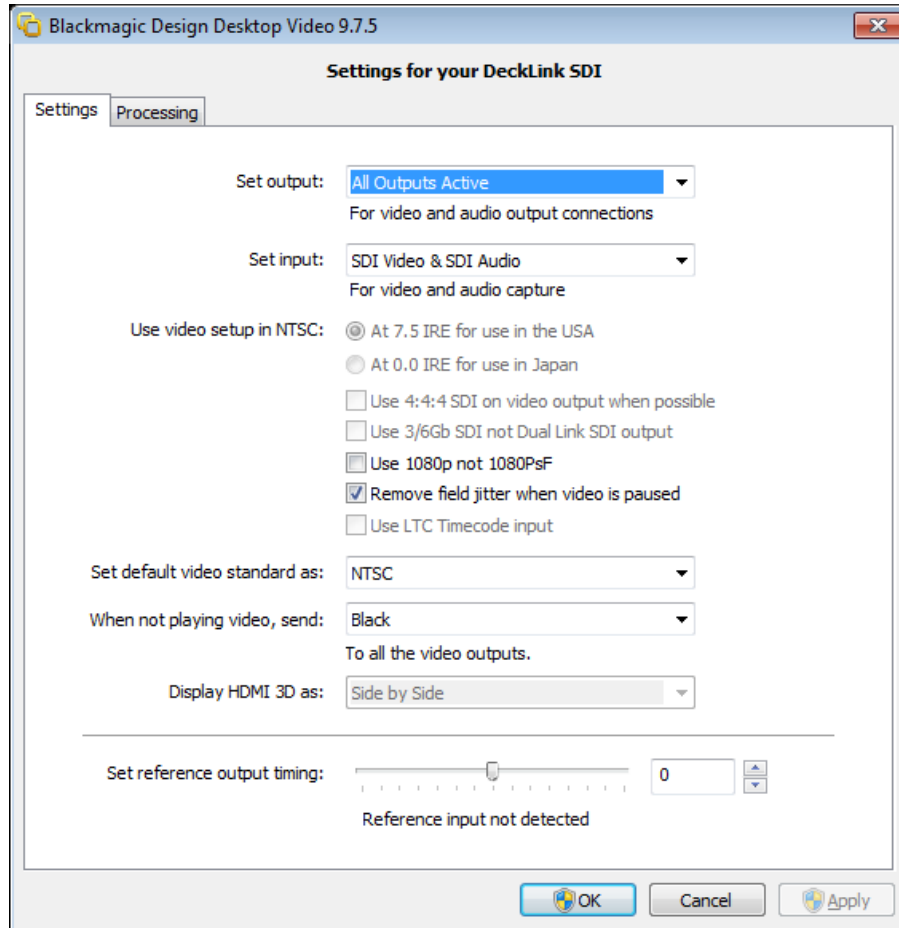
## Blackmagic Design Hardware

### Preparation

Install the latest version of Desktop Video software and confirm that the Blackmagic Design hardware works properly.

## Configure Blackmagic Design Control Panel

- 1) Open Windows Control Panel > Blackmagic Design Control Panel.
- 2) Blackmagic Design Control Panel will open. Configure the settings below:

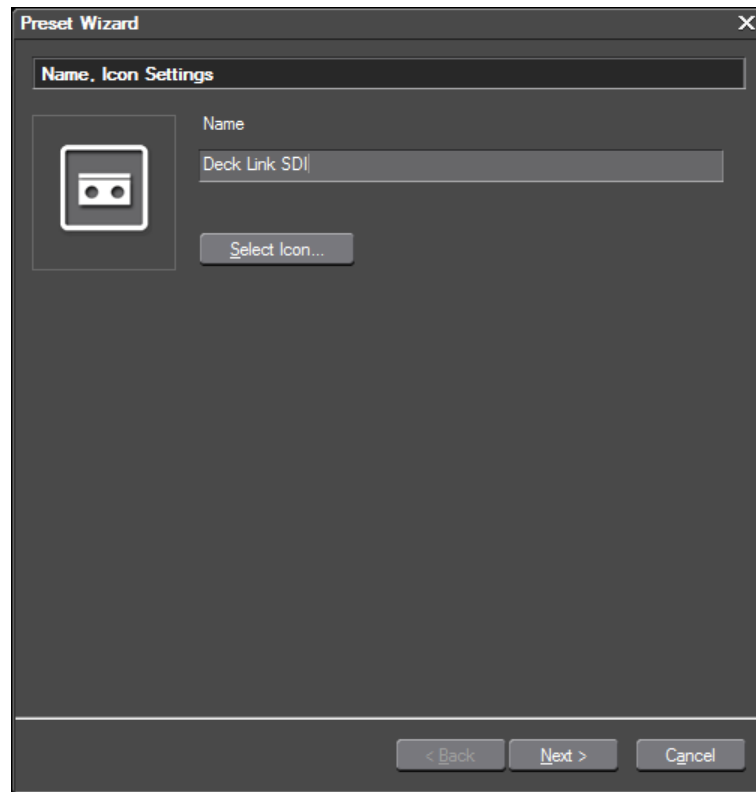


- Set output: All Outputs Active
  - Set input: Select input interface
- \*Set default for the rest of parameters.*

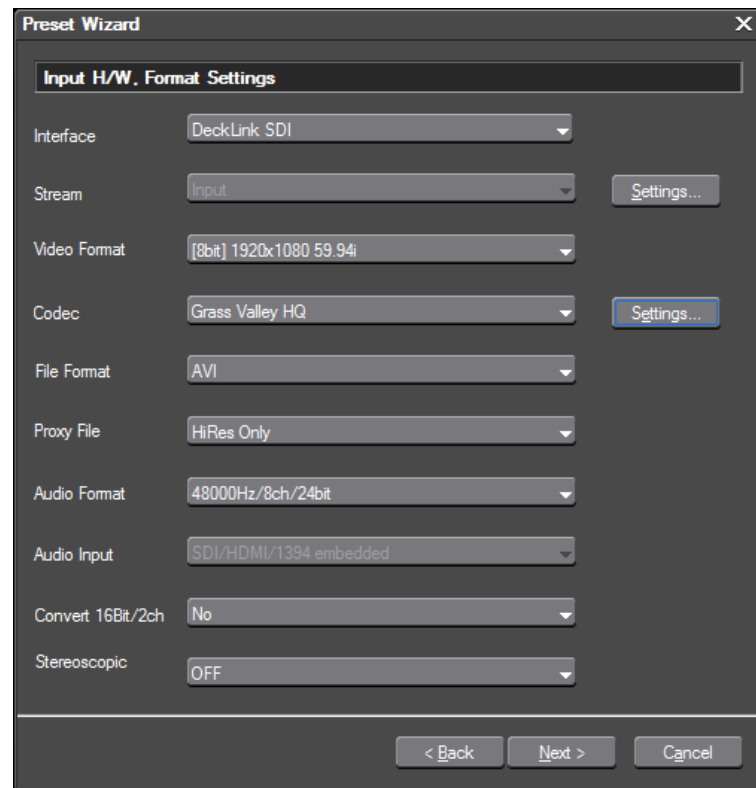
- 3) Click [Apply] and then [OK] button.

## Creating device preset in EDIUS 7

- 1) Choose [Settings] > [System Settings].
- 2) System settings window will appear. Choose [Hardware] > [Device Preset] in the left-pane.
- 3) Click [New] button in the right-pane.
- 4) Preset wizard will run. Enter preset name and select preset icon by clicking [Select Icon]. Click [Next] button after above.



6) Configure Input settings and then click [Next] button.



Interface: Choose installed hardware name

Video Format: Select supported video format

Codec, File Format: Select capture video and file format

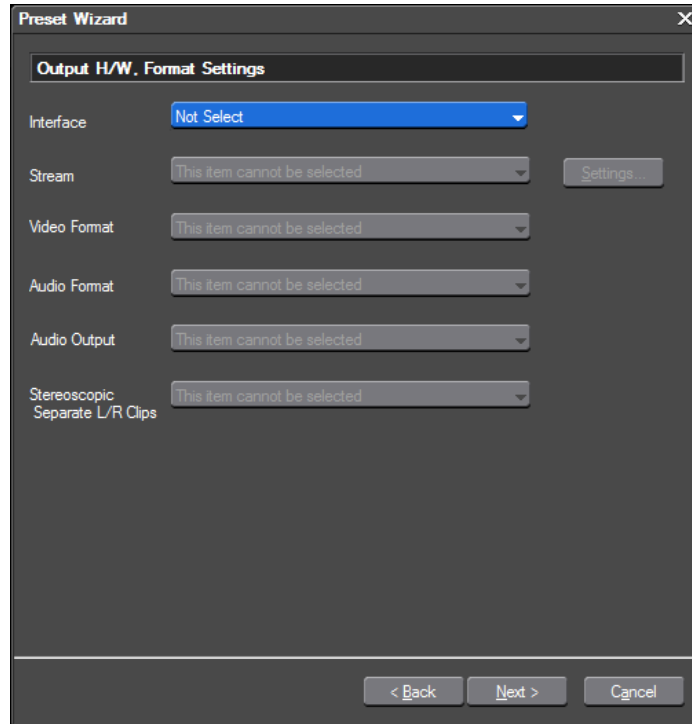
Proxy File: HiRes Only

Audio format: Select audio format depending audio channel you need

Convert 16bit/2ch: No

Stereoscopic: OFF

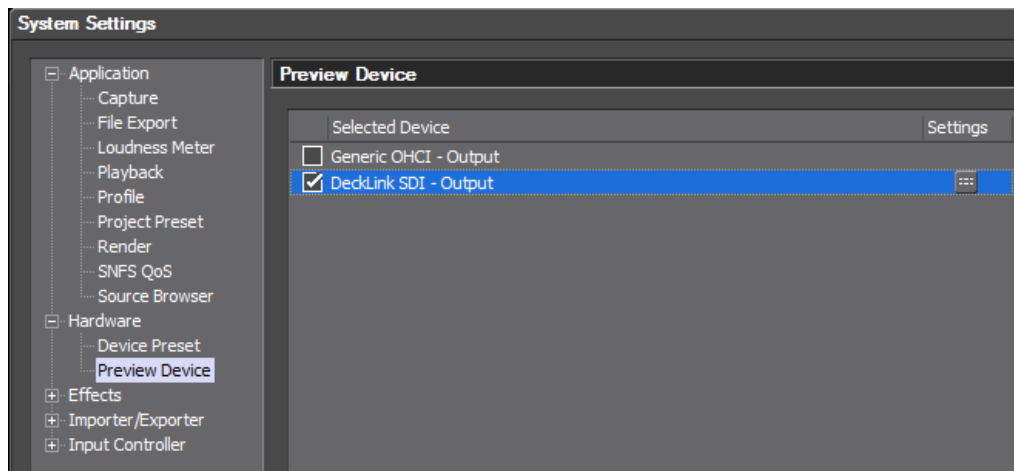
- 7) Select "Not Select" for interface and then click [Next] button.



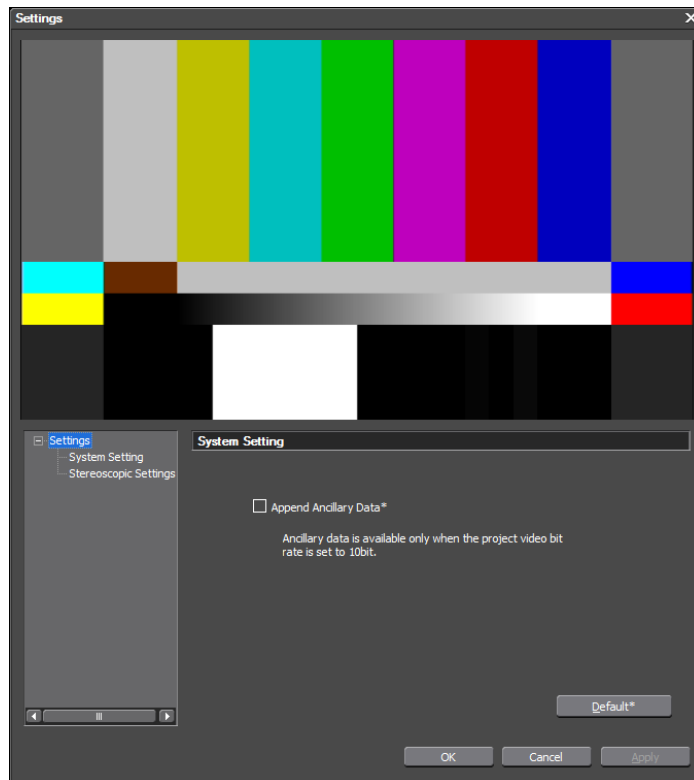
- 8) Click [Completed] button.

## Configuring preview device in EDIUS 7

- 1) Choose [Settings] > [System Settings].
- 2) System settings window will appear. Choose [Hardware] > [Preview Device] in the left-pane.
- 3) Select the Blackmagic Design hardware from the device list and then click settings button.



- 4) Settings window will appear. Check 'Append Ancillary Data' option if you want to out ancillary data via SDI output.



*\*This option can be used only in 10bit project.*

*\*\* If the H/W that does not support ancillary data I/O is installed, this option will be inactive.*

- 5) Click [Apply] then [OK] button.

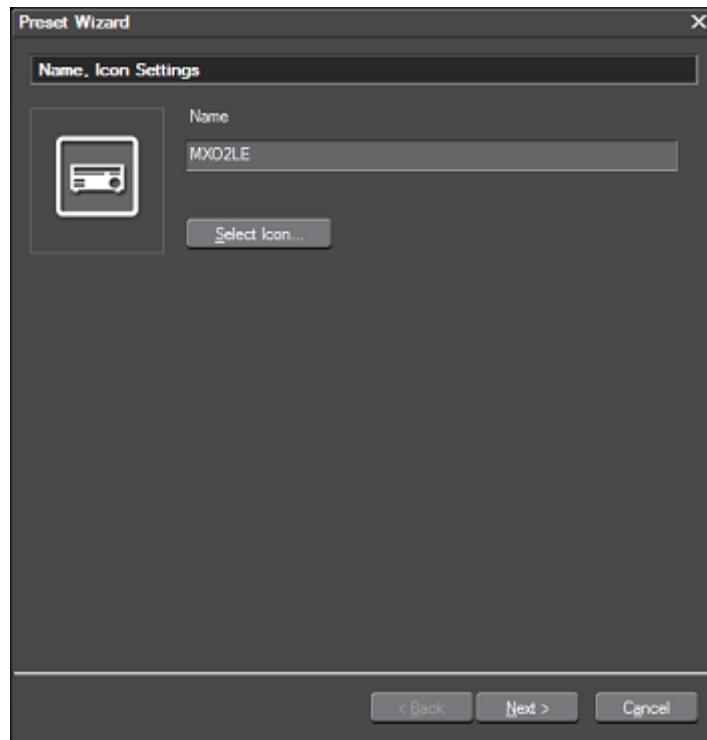
## Matrox Hardware

### Preparation

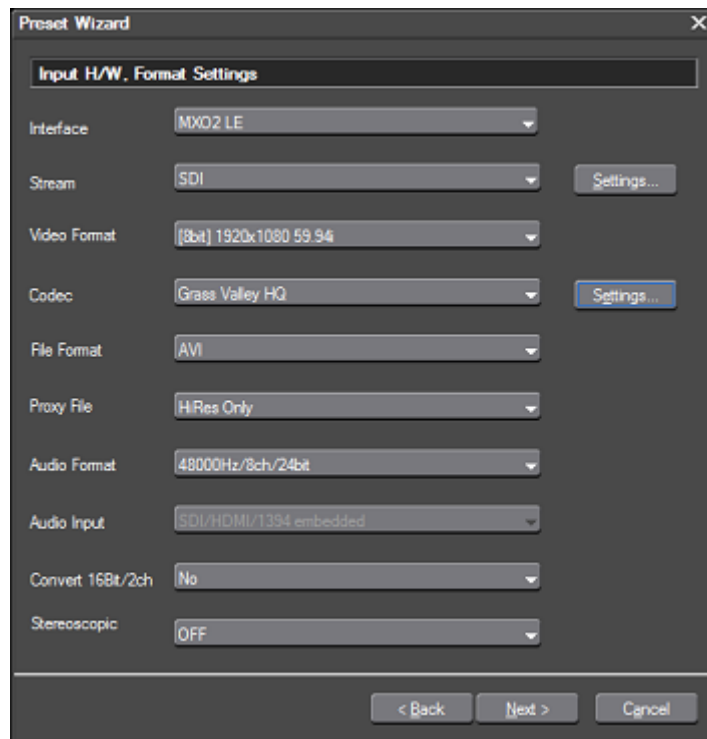
Install the latest version of Matrox Mtx utils software and confirm that your Matrox hardware works properly.

### Creating device preset in EDIUS 7

- 1) Choose [Settings] > [System Settings].
- 2) System settings window will appear. Choose [Hardware] > [Device Preset] in the left-pane.
- 3) Click [New] button in the right-pane.
- 4) Preset wizard will run. Enter preset name and select preset icon by clicking [Select Icon]. Click [Next] button after above.



5) Configure Input settings and then click [Next] button.



Interface: Choose installed hardware name

Video Format: Select supported video format

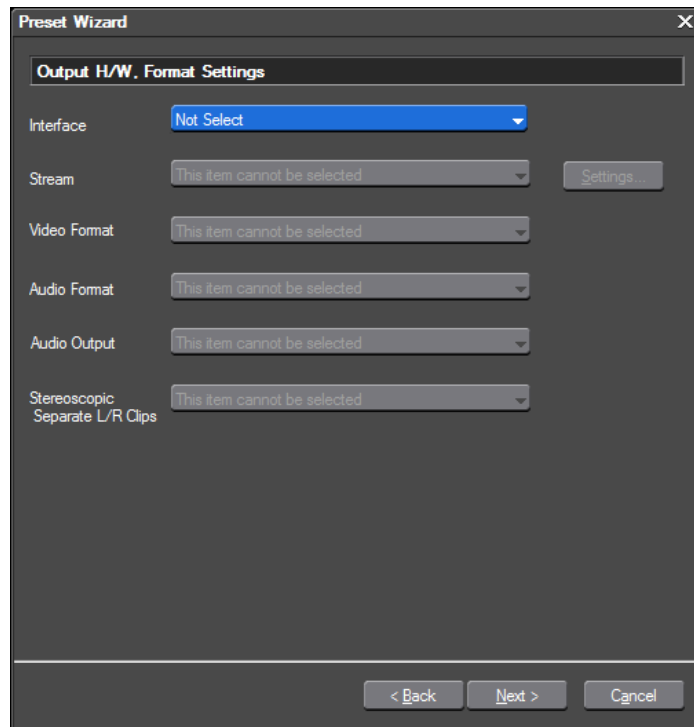
Codec, File Format: Select capture video and file format

Proxy File: HiRes Only

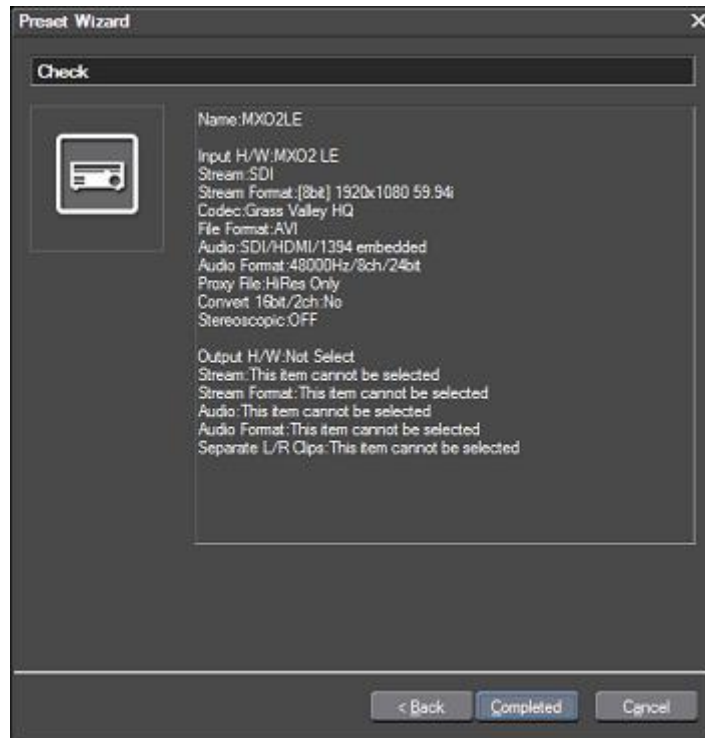
Audio format: Select audio format depending audio channel you need

Convert 16bit/2ch: No  
Stereoscopic: OFF

- 6) Select "Not Select" for interface and then click [Next] button.



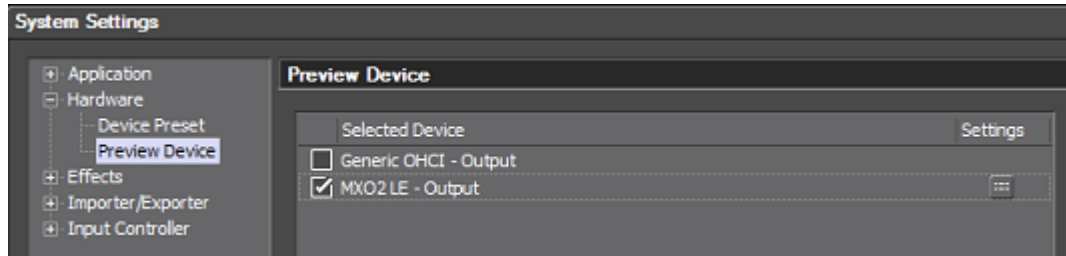
- 7) Click [Completed] button.





## Configuring preview device in EDIUS 7

- 1) Choose [Settings] > [System Settings].
- 2) System settings window will appear. Choose [Hardware] > [Preview Device] in the left-pane.
- 3) Select the Matrox hardware from the device list and then click settings button.



- 4) Click [Apply] and then [OK] button.