

EDIUS 8 Setup Instruction

for working with 3rd party Hardware

This instruction navigates how to setup EDIUS 8 to work with below 3rd party hardware:

- AJA Hardware
- Blackmagic Design Hardware
- Matrox Hardware

AJA Hardware

Preparation

Install the AJA Win Drivers v12.1.0 software and confirm that your AJA hardware works properly.

Switching working mode (only KONA 3G card)

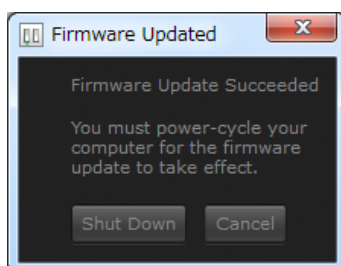
You need to switch working mode in AJA Control Panel due to 4K or standard mode:

- 1) Quit EDIUS if running.
- 2) Choose [Start] > [All Programs] > [AJA] > [AJA Control Panel].
- 3) AJA Control Panel will appear. Choose [Firmware] in the left-pane.
- 4) Choose desired mode from the list then click [Install] button.



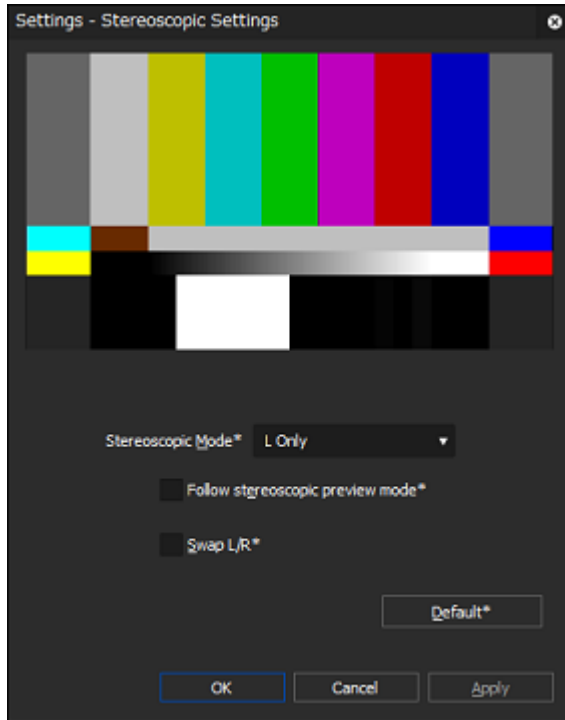
- 5) Selected firmware will be programmed. Do NOT quit AJA Control Panel or turn off the computer during programming the firmware.
- 6) Once programming the firmware succeeded, below dialog will appear. Please click [Shutdown] button.

NOTE: If you click [Cancel] button, please shutdown then restart the computer. AJA KONA 3G card will not work by programmed firmware until shutdown then restarting the computer.



Configuring preview device

- 1) Choose [Settings] > [System Settings].
- 2) System settings window will appear. Choose [Hardware] > [Preview Device] in the left-pane.
- 3) Check installed AJA hardware then click [...] button.
- 4) Configuration dialog for stereoscopic editing will appear. Configure the settings.



- 5) Click [Apply] then [OK] button.

Blackmagic Design Hardware

Preparation

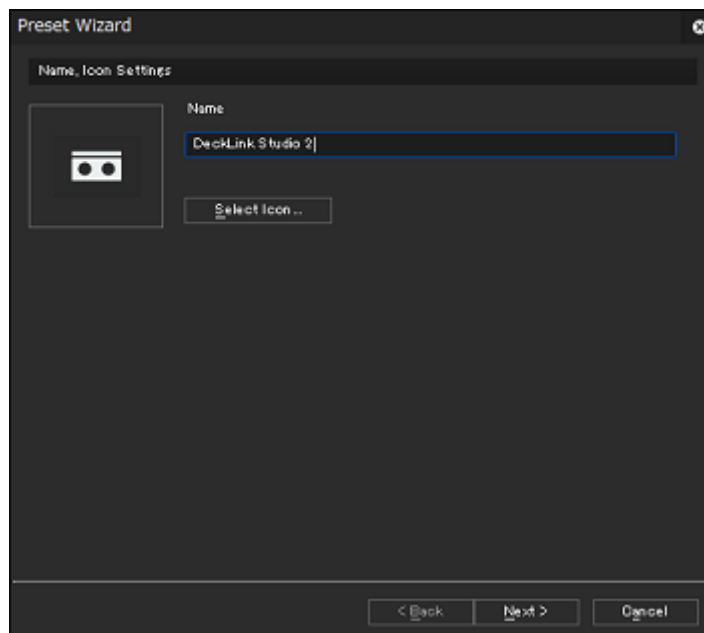
Install Desktop Video v10.3.7 software and confirm that the Blackmagic Design hardware works properly.

Configure Blackmagic Design Control Panel

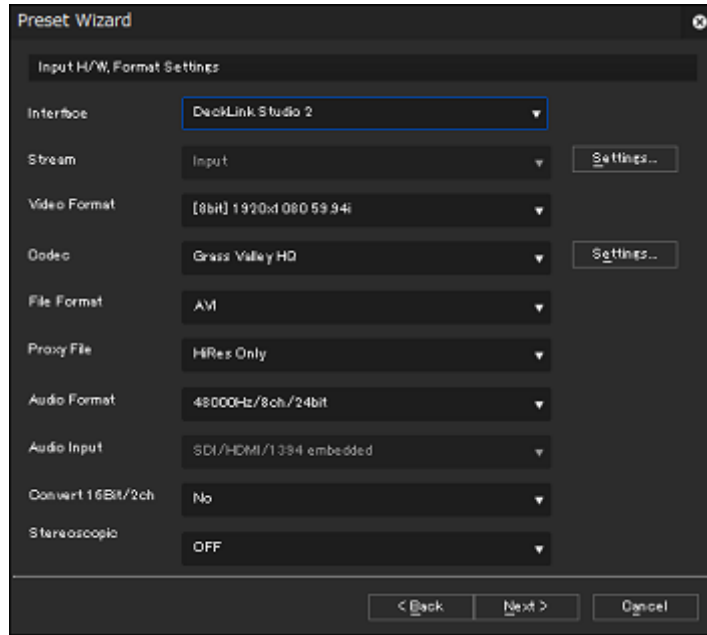
- 1) Open Windows Control Panel > Blackmagic Design Control Panel.
- 2) Blackmagic Design Control Panel will appear. Configure below settings:
 - For capture:
 - Select input connector
 - For preview or printing to tape:
 - Select audio output channel combination for analog and AES / EBU digital audio
- 3) Click [Apply] and then [OK] button.

Creating device preset in EDIUS 8

- 1) Choose [Settings] > [System Settings].
- 2) System settings window will appear. Choose [Hardware] > [Device Preset] in the left-pane.
- 3) Click [New] button in the right-pane.
- 4) Preset wizard will run. Enter preset name and select preset icon by clicking [Select Icon]. Click [Next] button after above.



- 6) Configure Input settings and then click [Next] button.



Interface: Choose installed hardware name

Video Format: Select supported video format

Codec, File Format: Select capture video and file format

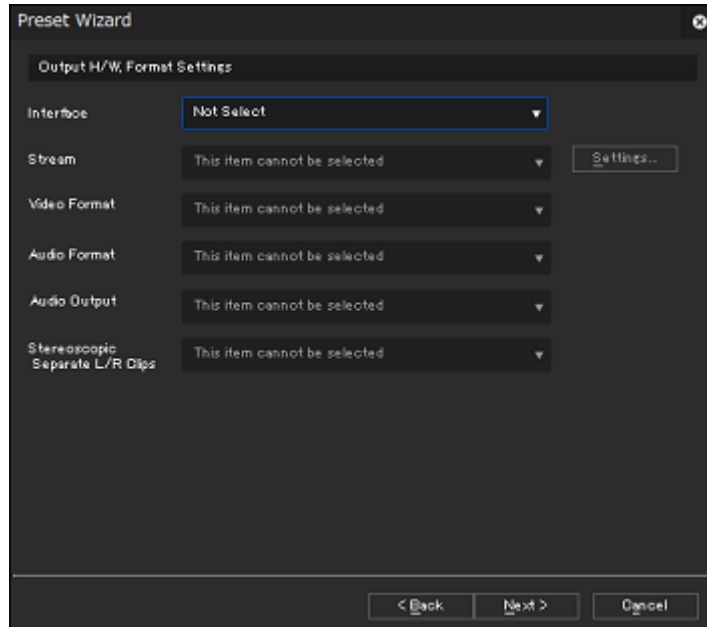
Proxy File: HiRes Only

Audio format: Select audio format depending audio channel you need

Convert 16bit/2ch: No

Stereoscopic: OFF

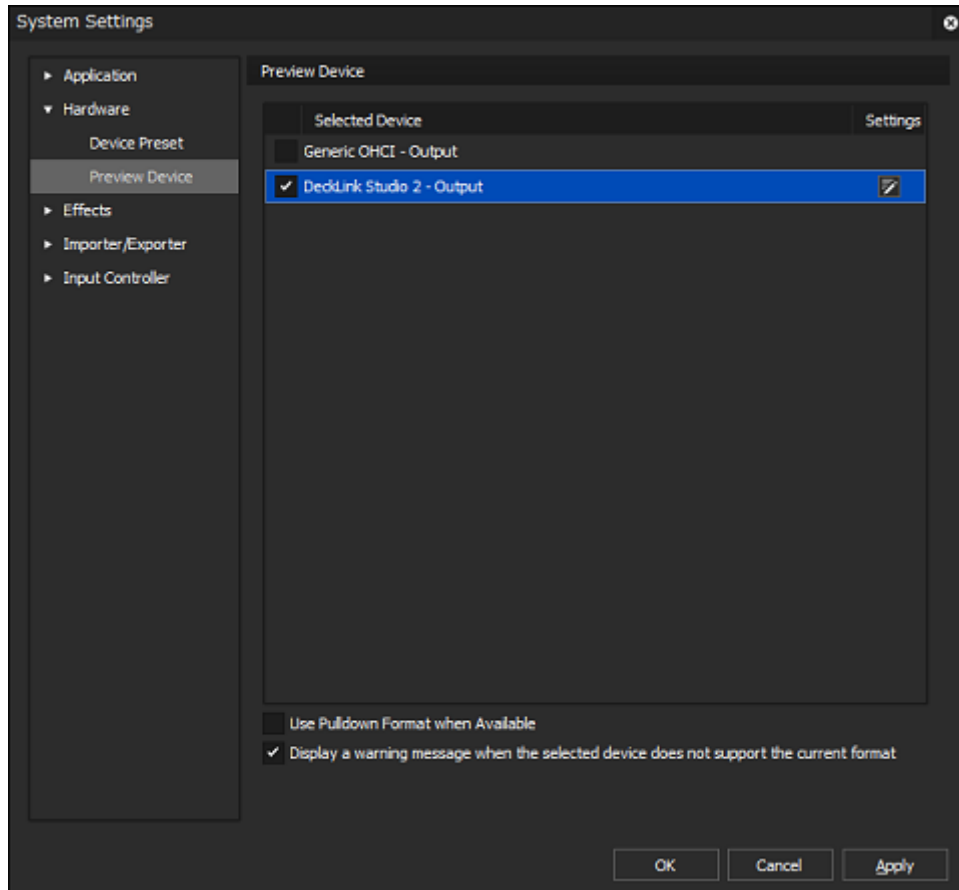
- 7) Select "Not Select" for interface and then click [Next] button.



- 8) Click [Completed] button.

Configuring preview device in EDIUS 8

- 1) Choose [Settings] > [System Settings].
- 2) System settings window will appear. Choose [Hardware] > [Preview Device] in the left-pane.
- 3) Select the Blackmagic Design hardware from the device list.



- 4) Click [Apply] then [OK] button.

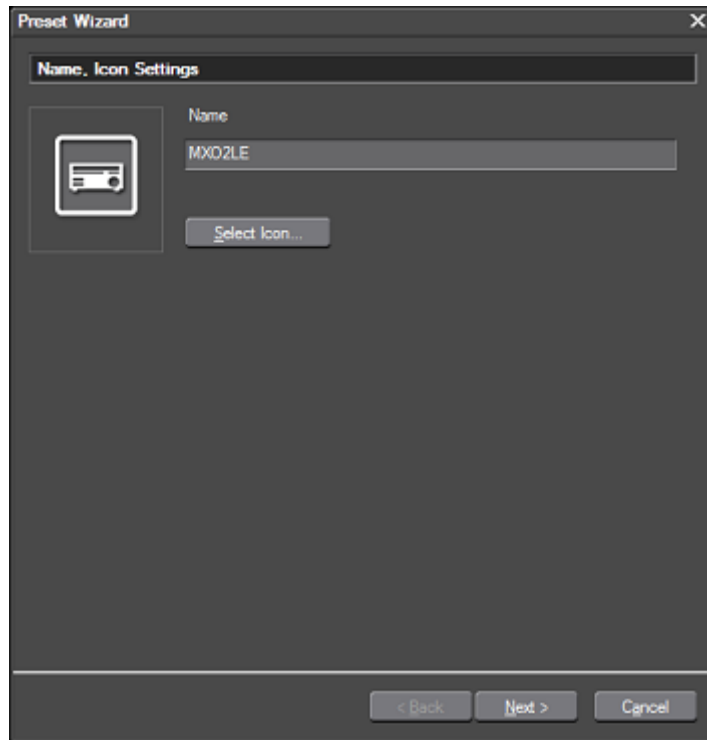
Matrox Hardware

Preparation

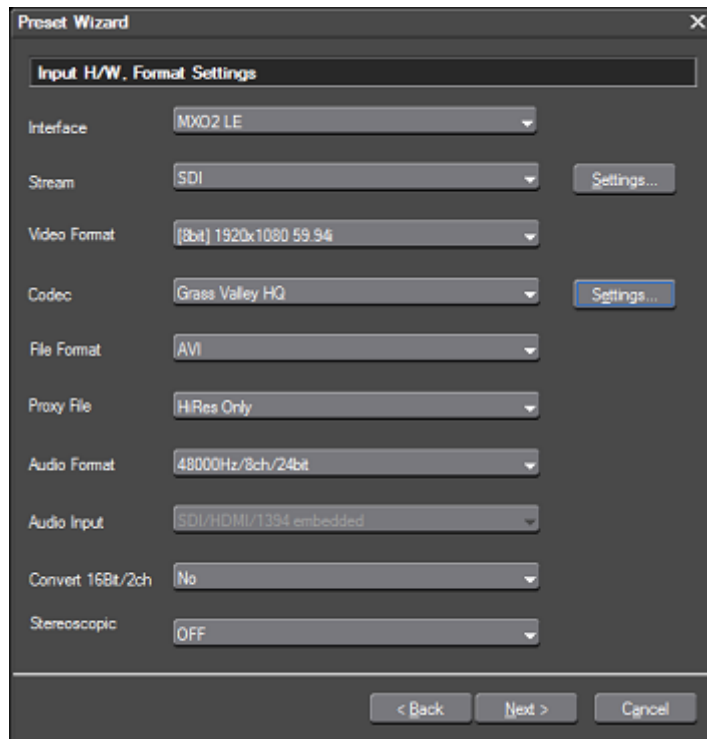
Install the latest version of Matrox Mtx utils v7.7.2 software and confirm that your Matrox hardware works properly.

Creating device preset in EDIUS 8

- 1) Choose [Settings] > [System Settings].
- 2) System settings window will appear. Choose [Hardware] > [Device Preset] in the left-pane.
- 3) Click [New] button in the right-pane.
- 4) Preset wizard will run. Enter preset name and select preset icon by clicking [Select Icon]. Click [Next] button after above.



5) Configure Input settings and then click [Next] button.



Interface: Choose installed hardware name

Video Format: Select supported video format

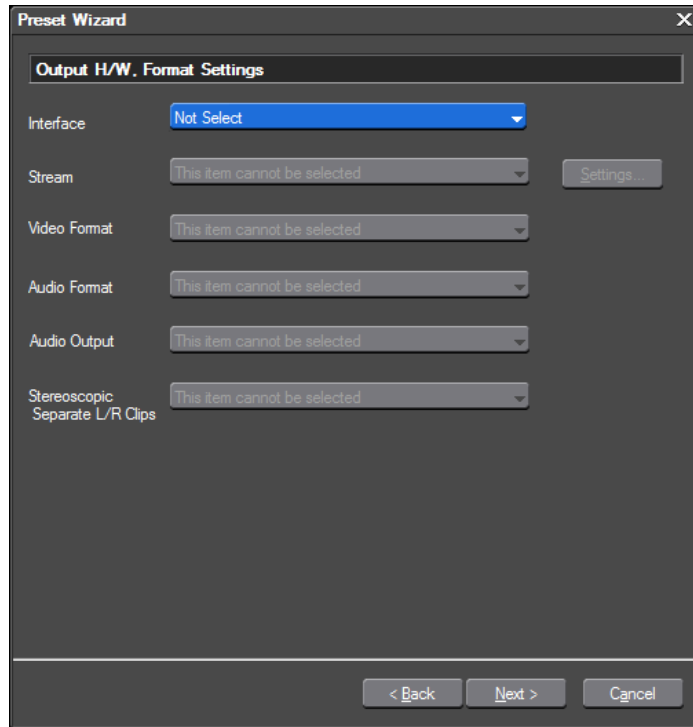
Codec, File Format: Select capture video and file format

Proxy File: HiRes Only

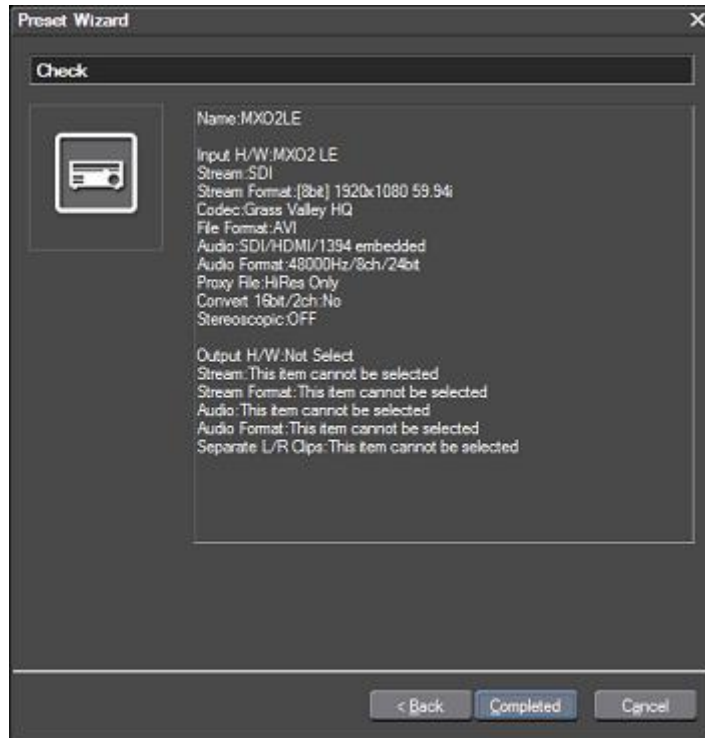
Audio format: Select audio format depending audio channel you need

Convert 16bit/2ch: No
Stereoscopic: OFF

6) Select "Not Select" for interface and then click [Next] button.

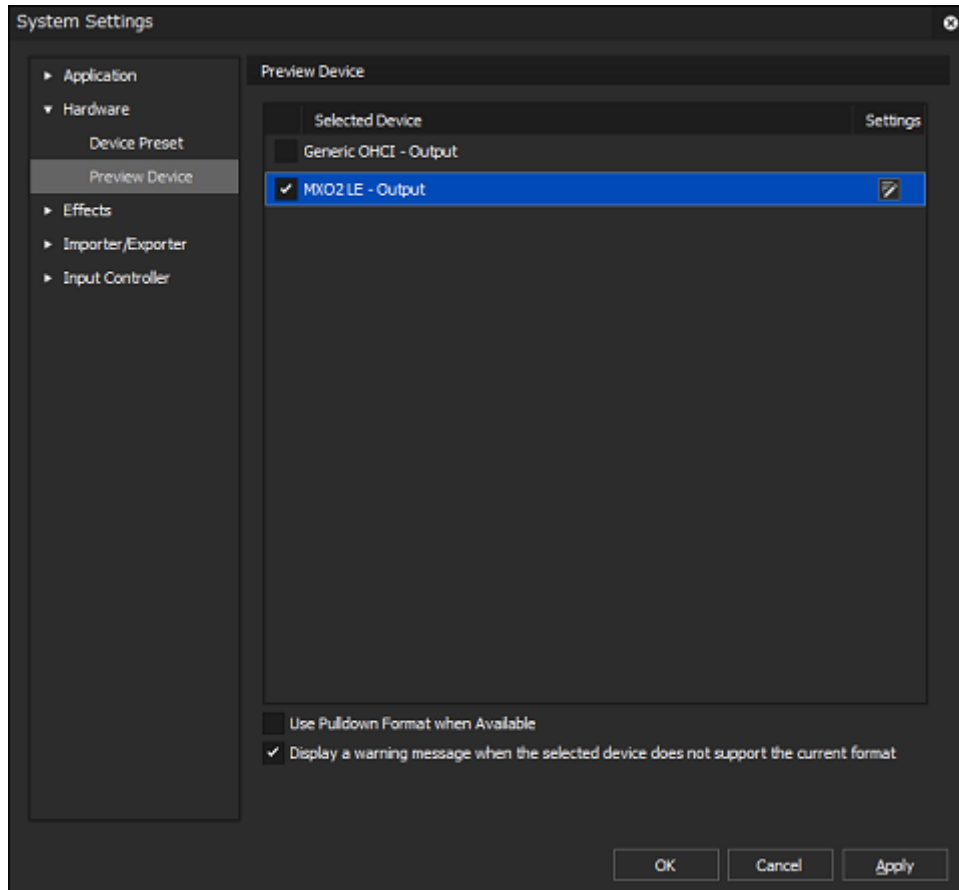


7) Click [Completed] button.



Configuring preview device in EDIUS 8

- 1) Choose [Settings] > [System Settings].
- 2) System settings window will appear. Choose [Hardware] > [Preview Device] in the left-pane.
- 3) Select the Matrox hardware from the device list.



- 4) Click [Apply] and then [OK] button.