

EDIUS 9 Setup Instruction

for working with 3rd party Hardware

This instruction navigates how to setup EDIUS 9 to work with below 3rd party hardware:

- AJA Hardware
- Blackmagic Design Hardware
- Matrox Hardware

AJA Hardware

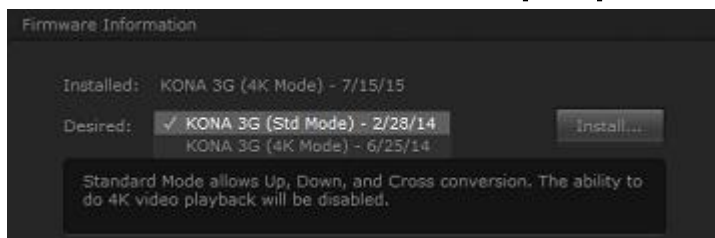
Preparation

Install the AJA Win Drivers v13.0.0 software and confirm that your AJA hardware works properly.

Switching working mode (only KONA 4 / 3G card)

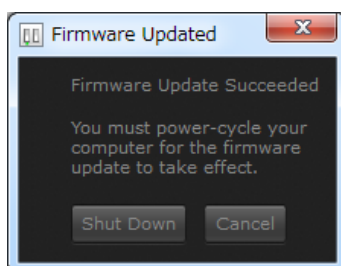
You need to switch working mode in AJA Control Panel due to 4K or standard mode:

- 1) Quit EDIUS if running.
- 2) Choose [Start] > [All Programs] > [AJA] > [AJA Control Panel].
- 3) AJA Control Panel will appear. Choose [Firmware] in the left-pane.
- 4) Choose desired mode from the list then click [Install] button.



- 5) Selected firmware will be programmed. Do NOT quit AJA Control Panel or turn off the computer during programming the firmware.
- 6) Once programming the firmware succeeded, below dialog will appear. Please click [Shutdown] button.

NOTE: If you click [Cancel] button, please shutdown then restart the computer. AJA KONA 3G card will not work by programmed firmware until shutdown then restarting the computer.



Configuring preview device in EDIUS 9

- 1) Choose [Settings] > [System Settings].
- 2) System settings window will appear. Choose [Hardware] > [Preview Device] in the left-pane.
- 3) Check installed AJA hardware.
- 4) Click [Apply] then [OK] button.

Blackmagic Design Hardware

Preparation

Install Desktop Video v10.9.5 software and confirm that the Blackmagic Design hardware works properly.

Configure Blackmagic Design Control Panel

- 1) Open Windows Control Panel > Blackmagic Design Control Panel.
- 2) Blackmagic Design Control Panel will appear. Select audio output channel combination for analog and AES / EBU digital audio
- 3) Click [Apply] and then [OK] button.

Configuring preview device in EDIUS 9

- 1) Choose [Settings] > [System Settings].
- 2) System settings window will appear. Choose [Hardware] > [Preview Device] in the left-pane.
- 3) Select the Blackmagic Design hardware from the device list.
- 4) Click [Apply] then [OK] button.

Matrox Hardware

Preparation

Install the latest version of Matrox Mtx utils v8.0.0.15342 software and confirm that your Matrox hardware works properly. Also upgrade EDIUS to 9.20.3340 or later.

Configuring preview device in EDIUS 9

- 1) Choose [Settings] > [System Settings].
- 2) System settings window will appear. Choose [Hardware] > [Preview Device] in the left-pane.
- 3) Select the Matrox hardware from the device list.
- 4) Click [Apply] and then [OK] button.