

# EDIUS Instruction – Project Settings

## 1. Overview

EDIUS has many parameters to identify project format. This document explains each value of project setting.

## 2. Basic settings

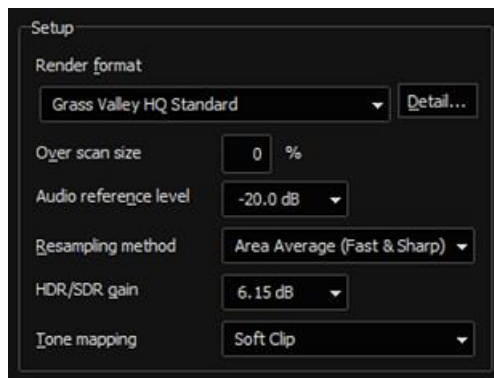
### 2-1. Video & Audio preset

You can select combination of video and audio format typically used in ‘video world’ – broadcast, production and etc.



### 2-2. Setup

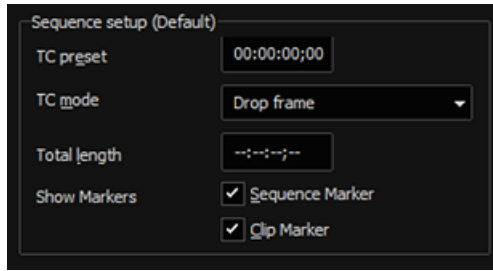
Configure timeline render settings.



Value	Desc.	Note
Render format	Select video codec that is used for partial render (Render menu)	Selectable codec is vary depending on the video format you select
Overscan size	Set overscan size to get same display area as analog monitor / TV while editing and previewing footage on PC monitor	Modern display / TV does not have overscan. In almost cases, you can set 0% value
Audio reference level	Select audio reference level from -20, -18 or -12 dB	
Resampling method	Select footage resampling method that is used in Layouter	
HDR / SDR gain	Select gain level from HDR to SDR	If your HDR project should consider to use in SDR workflow, select the gain level
Tone mapping	Adjust color tone in order to get preferable SDR footage	If your HDR project should consider to use in SDR workflow, select 'Soft Clip' option is recommended

## 2-3. Sequence setup

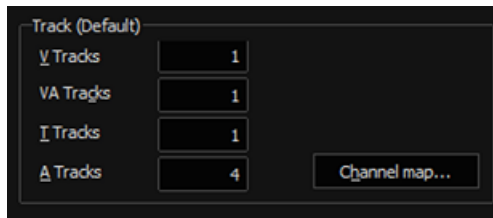
Configure timeline sequence settings



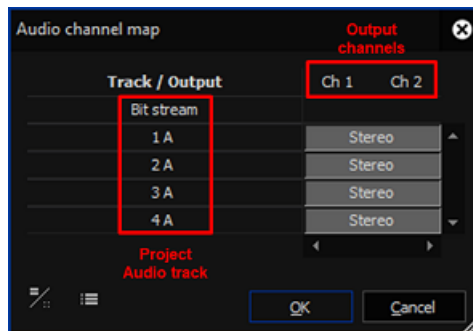
Value	Desc.	Note
TC preset	Timeline sequence start timecode	
TC mode	Timeline sequence timecode type	Select either Drop or Non-drop frame
Total length	If you want to have fixed length, set the timeline sequence length (HH:MM:SS;FF)	Up to 23:59:59:xx* * Depends on selected frame rate
Show markers	Shows selected markers	

## 2-4. Track setup

Configure default number of each track

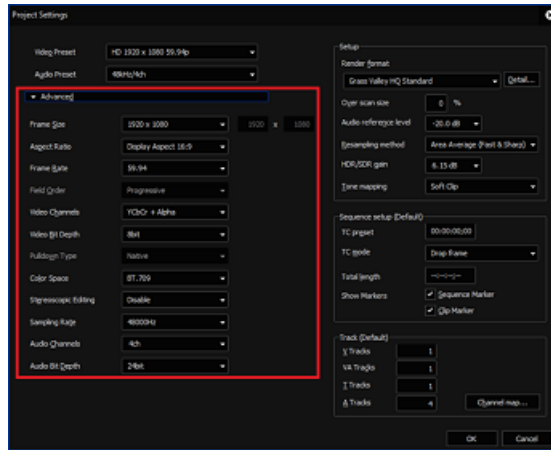


By clicking [Channel mapping], you can map audio channels



## 3. Advanced settings

If you want to select more options, use Advanced settings. Click Advanced to open the settings.



Value	Desc.	Note
Frame size	Video resolution. You can select other size that does not appear in 'Video Preset' list	
Aspect ratio	Select which aspect ratio and size you use	
Frame rate	Video frame rate. If you set other frame size like custom size, set frame rate	
Field order	This depends on video preset type you select	If you switch from progressive to interlaced, this pane will be active
Video Channels	Select using alpha channel in the timeline or not	Some video format doesn't support alpha channel like XDCAM
Video Bit Depth	Video color depth	If you select 10bit, system will be much loaded
Pulldown Type	Use transferring process option	Only available when you select 24 or 23.98p series format
Color Space	Timeline color space	
Stereoscopic Editing	If you select 'Enable' then start a project, EDIUS will proceed required process for stereoscopic editing like automatic association of clips	No longer available in EDIUS 11
Sampling Rate	Audio sampling rate	
Audio Channels	Output audio channels	
Audio Bit Depth	Audio bit depth	