



Grass Valley
WE LOVE LIVE

EDIUS® 11

EDIT ANYTHING. FAST

Software version 11.00.12809

**Floating License Server
Users Guide
October 2023**

www.grassvalley.com

Copy and Trademark Notice

Grass Valley®, GV® and the Grass Valley logo and / or any of the Grass Valley products listed in this document are trademarks or registered trademarks of GVBB Holdings SARL, Grass Valley USA, LLC, or one of its affiliates or subsidiaries. All third party intellectual property rights (including logos or icons) remain the property of their respective owners

Copyright ©2021 GVBB Holdings SARL and Grass Valley USA, LLC. All rights reserved.

Specifications are subject to change without notice.

Other product names or related brand names are trademarks or registered trademarks of their respective companies.

Terms and Conditions

Please read the following terms and conditions carefully. By using EDIUS documentation, you agree to the following terms and conditions.

Grass Valley hereby grants permission and license to owners of to use their product manuals for their own internal business use. Manuals for Grass Valley products may not be reproduced or transmitted in any form or by any means, electronic or mechanical, including photocopying and recording, for any purpose unless specifically authorized in writing by Grass Valley.

A Grass Valley manual may have been revised to reflect changes made to the product during its manufacturing life. Thus, different versions of a manual may exist for any given product. Care should be taken to ensure that one obtains the proper manual version for a specific product serial number.

Information in this document is subject to change without notice and does not represent a commitment on the part of Grass Valley.

Warranty information is available from the Legal Terms and Conditions section of Grass Valley's website (www.grassvalley.com).

TABLE OF CONTENTS

Copy and Trademark Notice	1
Terms and Conditions	1
Chapter 1 EDIUS Floating License System	3
Overview	3
About this document	3
Server Operating Environment	3
Chapter 2 Installing the server software.....	4
Chapter 3 GV License Manager operation.....	5
Run GV License Manager (Server Mode)	5
GV License Manager User Interface	6
Confirm “Running” status of the services.....	6
Chapter 4 License activation	7
License activation (Online).....	7
License activation (Offline).....	8
Chapter 5 Use floating license	11
EDIUS client configuration	11
Use floating license	11
Chapter 6 Server administration	12
Administrative console sign in	12
Verify concurrent licenses.....	12
Restart license server modules	13
Chapter 7 License deactivation.....	15
Chapter 8 Troubleshooting	18
An error occurs while starting EDIUS	18
Several functions disabled in EDIUS	18
An error occurs while license activation / deactivation	19
Forgot Flexnet Publisher password	19
Chapter 9 Replace server computer	21
APPENDIX	22
What version of the floating license am I using?	22
Create system report file.....	22
Configure Microsoft Edge browser to use administrative console	22

Chapter 1 EDIUS Floating License System

Overview

EDIUS requires license activation on each editing PC. You are required to manage license activation status. For example, in case of working multiple clients work on an editing eco system, you have to manage number of the license being activated or not activated.

On the floating license system, a license is checked out from the server when starting EDIUS. When EDIUS is quit, the license is automatically checked into the server. Benefit is that customers are freed from the burden of license management.

About this document

This manual navigates building stand-alone floating license server that does not work with Chorus Hub server. To build the floating license server that works on the Chorus Hub server, see “Chorus Hub Server Users Guide”.

Server Operating Environment

IMPORTANT NOTE

- You cannot build the floating license server in EDIUS editing client machine.
- Chorus Hub Server system requirements take precedence over below requirements. See “Chorus Hub Server Users Guide” more details.

OS

- Windows Server 2022
- Windows Server 2019
- Windows Server 2016

NOTE

- Obtain the latest update from Windows Update.
- Virtual environment is not supported.
- Both Windows Server 2022 and 2016 are supported only in stand-alone floating license server.

CPU

Use processor that the operating system requires.

Memory

EDIUS floating license server requires minimum memory size that the operating system requires plus 1GB memory.

Hard Disk

To run EDIUS floating license server, 40GB or more hard disk space is required.

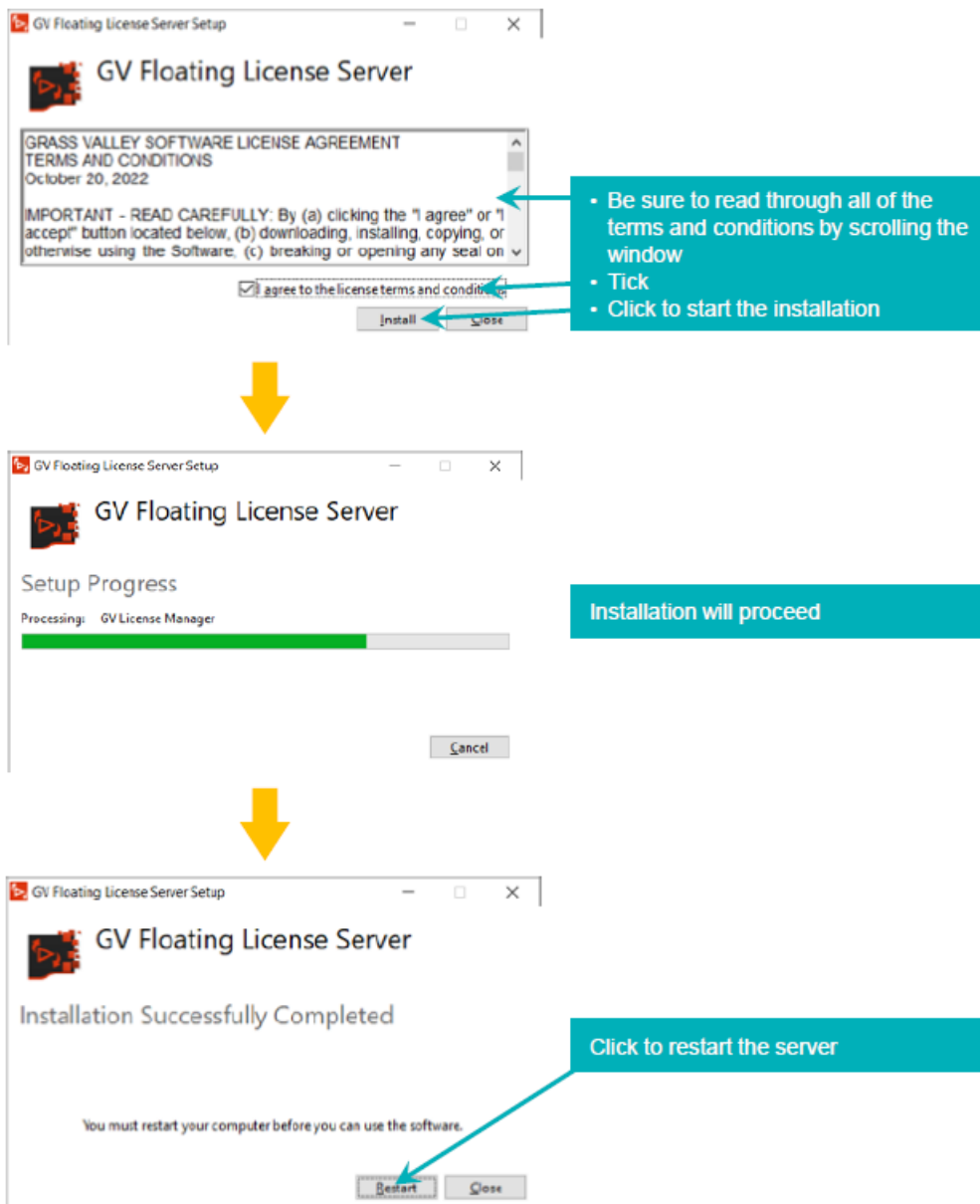
Web browser

Set Internet Explorer or Microsoft Edge as default web browser.

Chapter 2 Installing the server software

Install EDIUS Floating License server on a computer you want to use as floating license server.

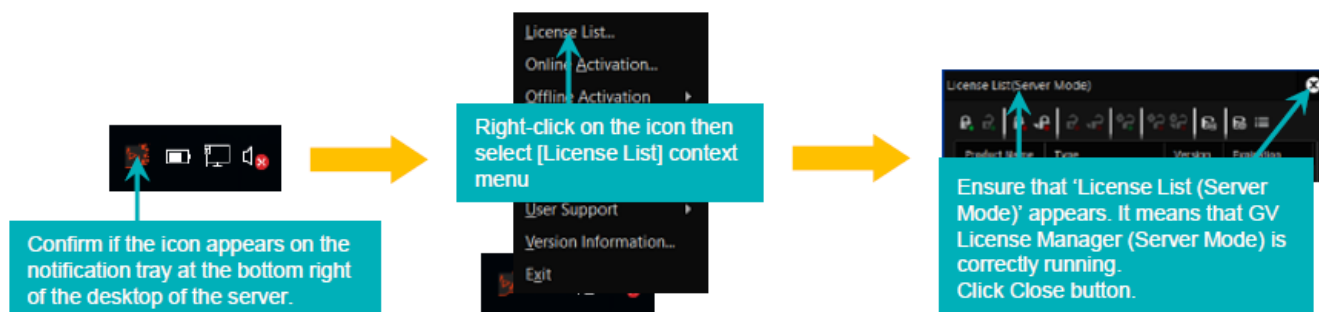
- 1 Sign into the OS with administrator privileges.
- 2 Run **GV_FloatingLicense_Setup-11.xx.xxxx.exe**
- 3



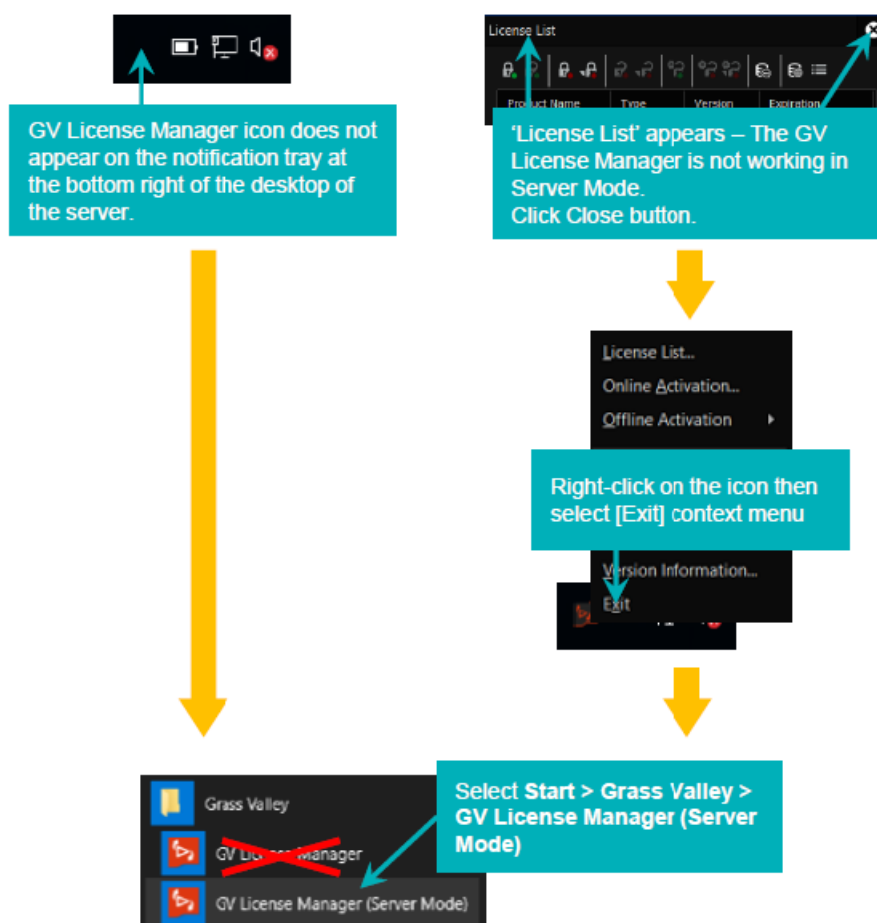
Chapter 3 GV License Manager operation

Run GV License Manager (Server Mode)

GV License Manager (Server Mode) should be running for working the floating license system. It will automatically starts. Follow the steps to confirm if it is running expectedly.

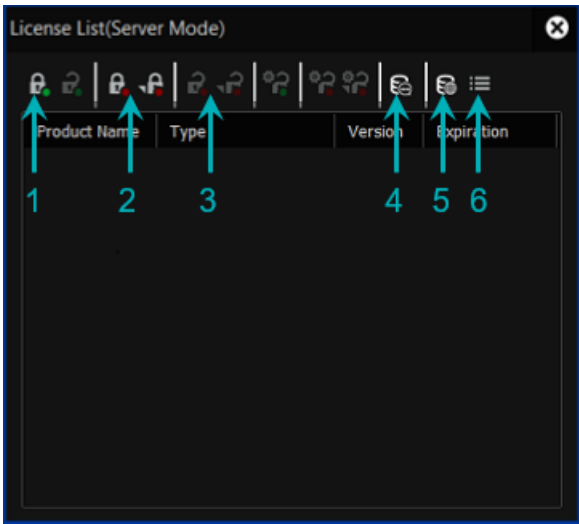


There may be two situations of not running of GV License Manager (Server Mode). Try to start the GV License Manager (Server Mode) manually.



GV License Manager User Interface

Floating license main operation works on the GV License Manager license list user interface.



1	Online license activation
2	Offline license activation
3	Offline license deactivation
4	Check expiration date of activated license
5	Open license server in browser
6	Open Settings

Confirm “Running” status of the services

Required services should be running for working of GV License Manager. Confirm the status of the service in the Services list.

- 1 Open the Task Manager then select [Services] tab.
- 2 Ensure that below two services have ‘Running’ status.
 - FlexNet Licensing Service 64
 - GVLicenseServer

NOTE If these do not have “Running” status, right-click on the service then select [Restart] context menu. If the service does not appear in the list, try to restart the server computer.

- 3 Close the Task Manager.

Chapter 4 License activation

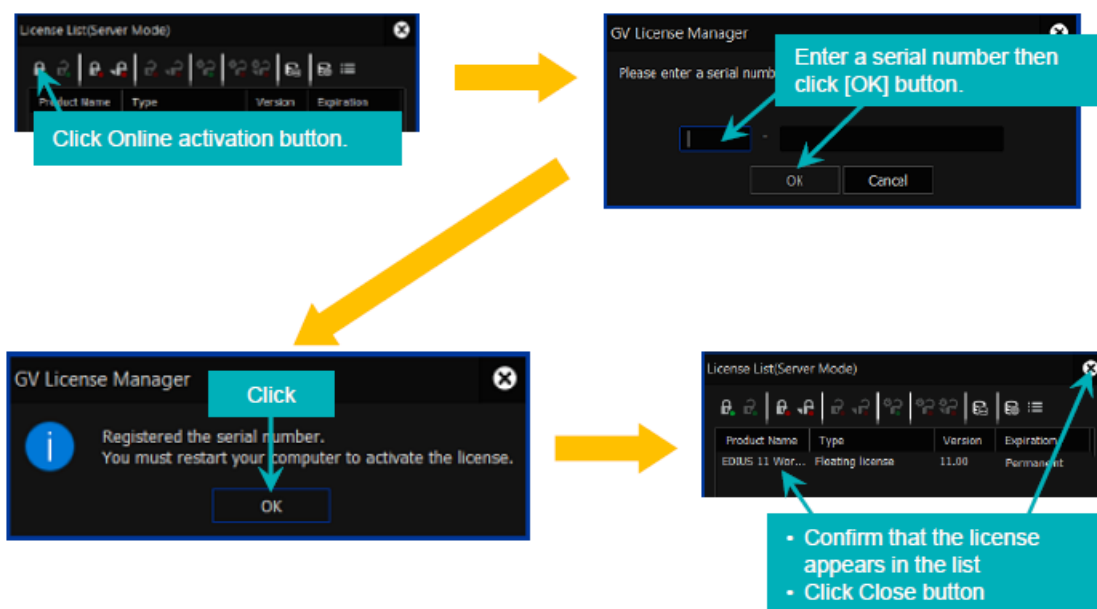
Activate floating license after the server installation completed. Select either way (online or offline) to activate the floating license.

NOTE Ensure that the GV License Manager (Server Mode) is running.
 ▶ [Run GV License Manager \(Server Mode\)](#)

License activation (Online)

The server is required internet connectivity to activate the license in online mode.

1



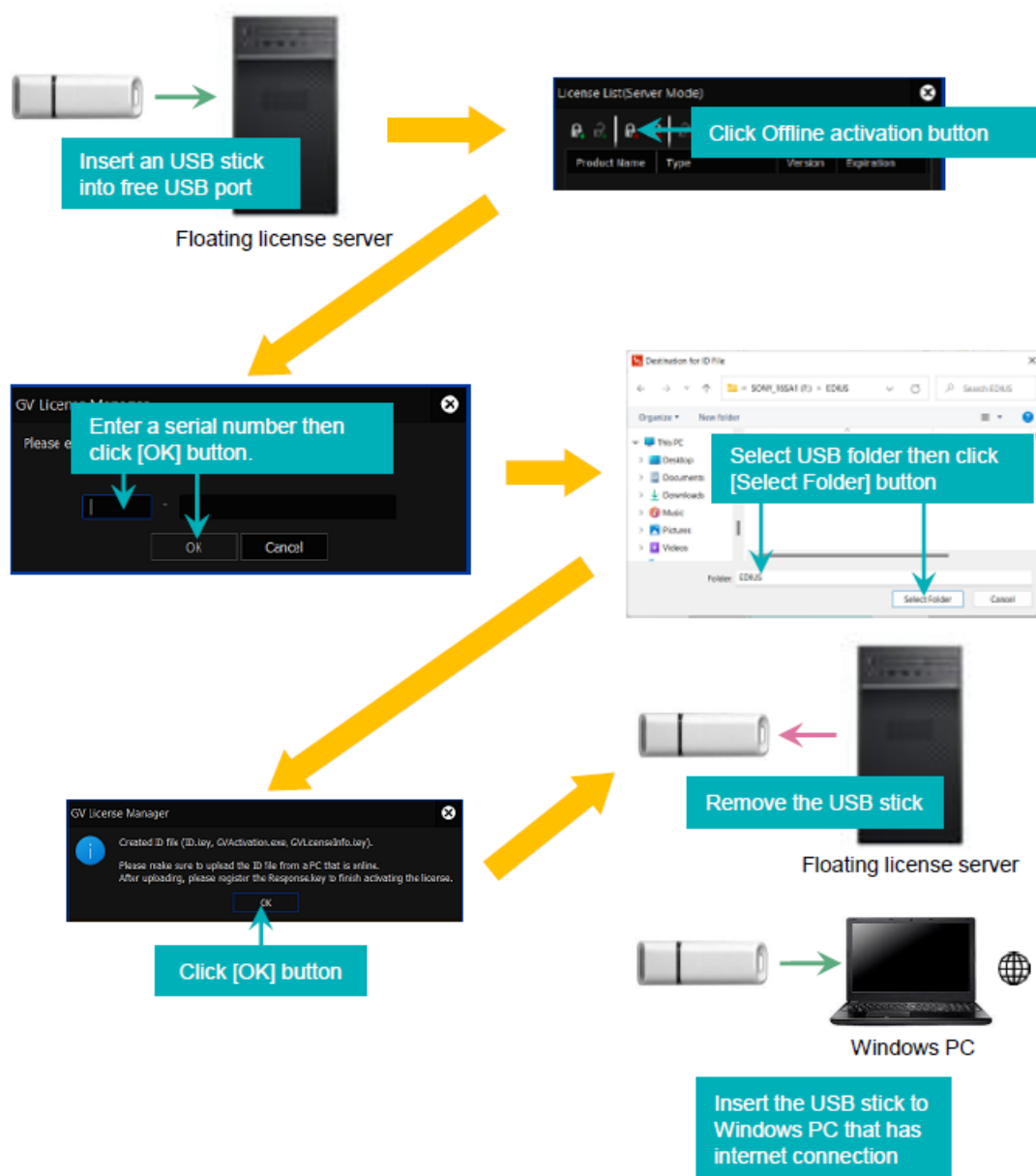
2 Restart the server computer to activate the license.

NOTE GV License Manager will not proceed restarting the server. The server should be restarted manually.

License activation (Offline)

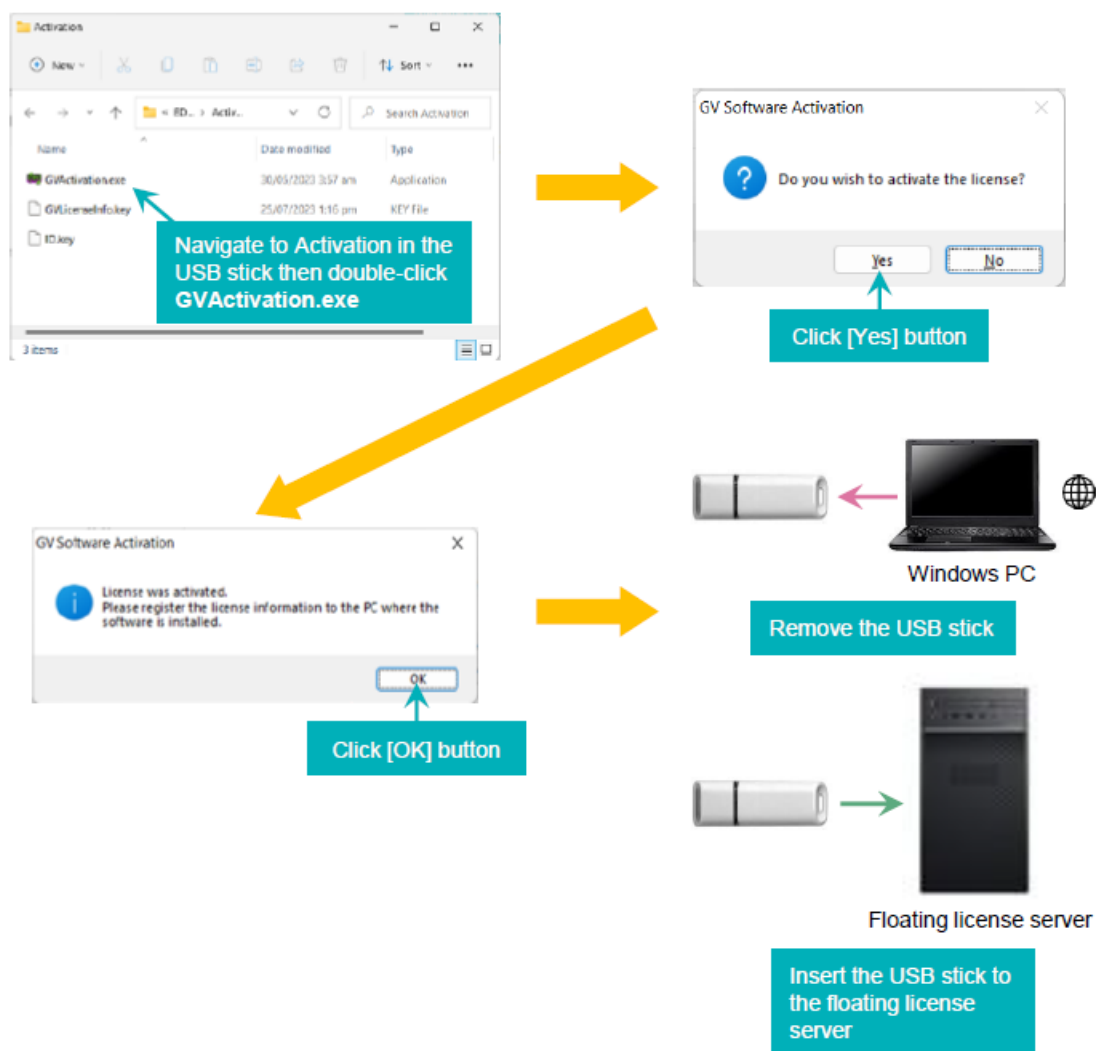
If the server computer does not have internet connectivity, activate the license in offline mode. Below three steps require to activate the license:

- 1 Create ID file on the server computer:



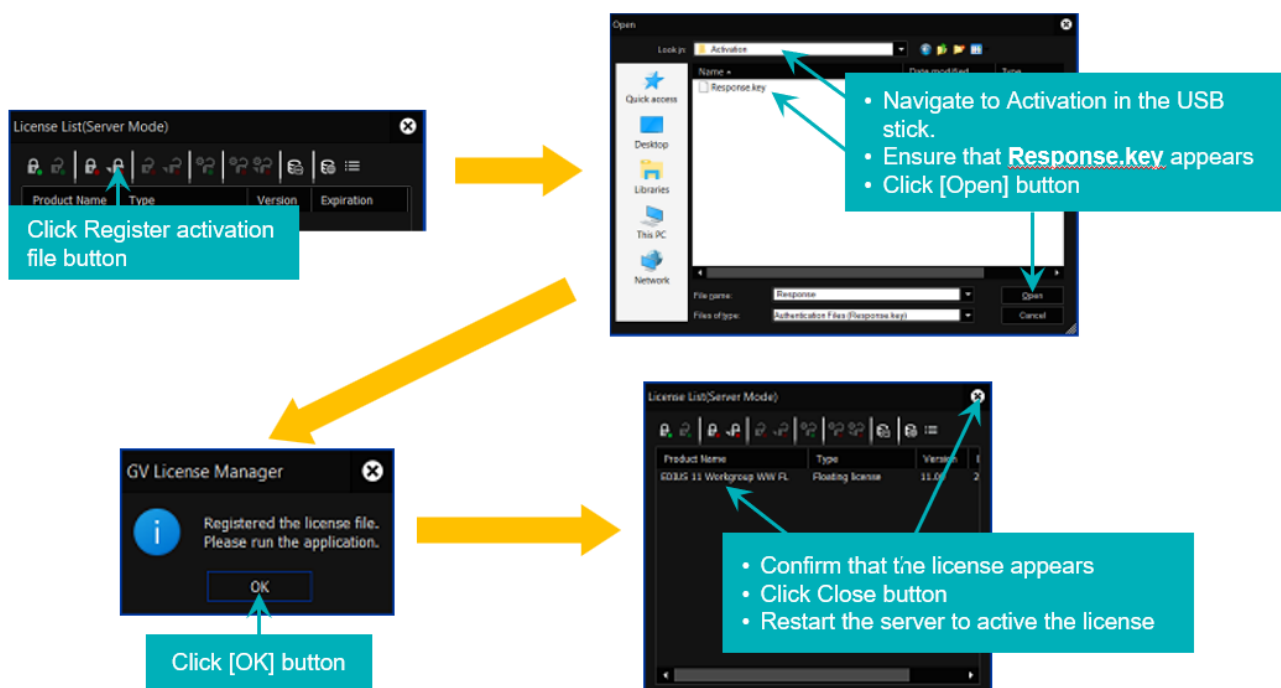
Go to step#2 to get the license key file.

2 Get the license key (Response.key) file on Windows PC



Go to step#3 to register the license key file on the server.

3 Register Response.key file on the server



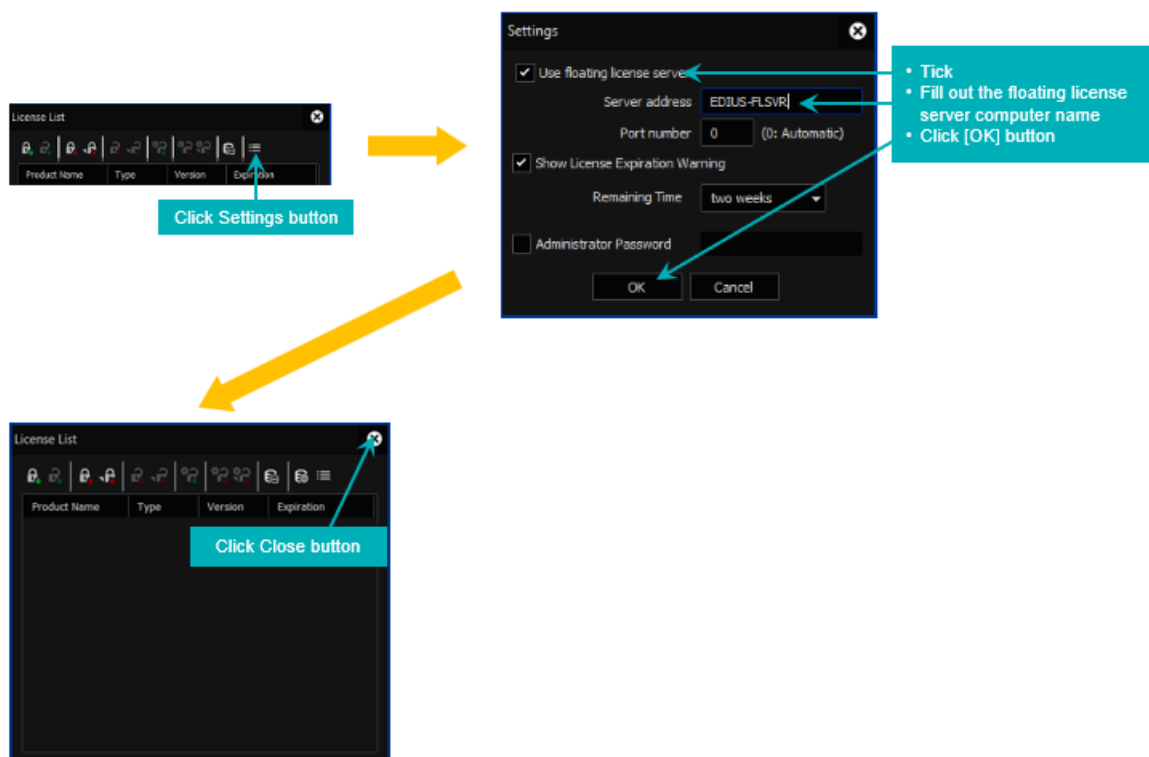
NOTE GV License Manager will not proceed restarting the server. The server should be restarted manually.

Chapter 5 Use floating license

EDIUS client configuration

Configure GV License Manager in EDIUS client to use the floating license:

- 1 Open GV License Manager (select [License List] context menu) from the notification tray at the bottom right of the desktop of the client.
- 2



Use floating license

Double-click EDIUS icon on the desktop. EDIUS client will check out a floating license from the server. Once successful, EDIUS will start.

NOTE

If "Check the status of the network and remaining number of licenses on the server" appears, confirm left of copies using license server web console.

► [An error occurs while starting EDIUS](#)

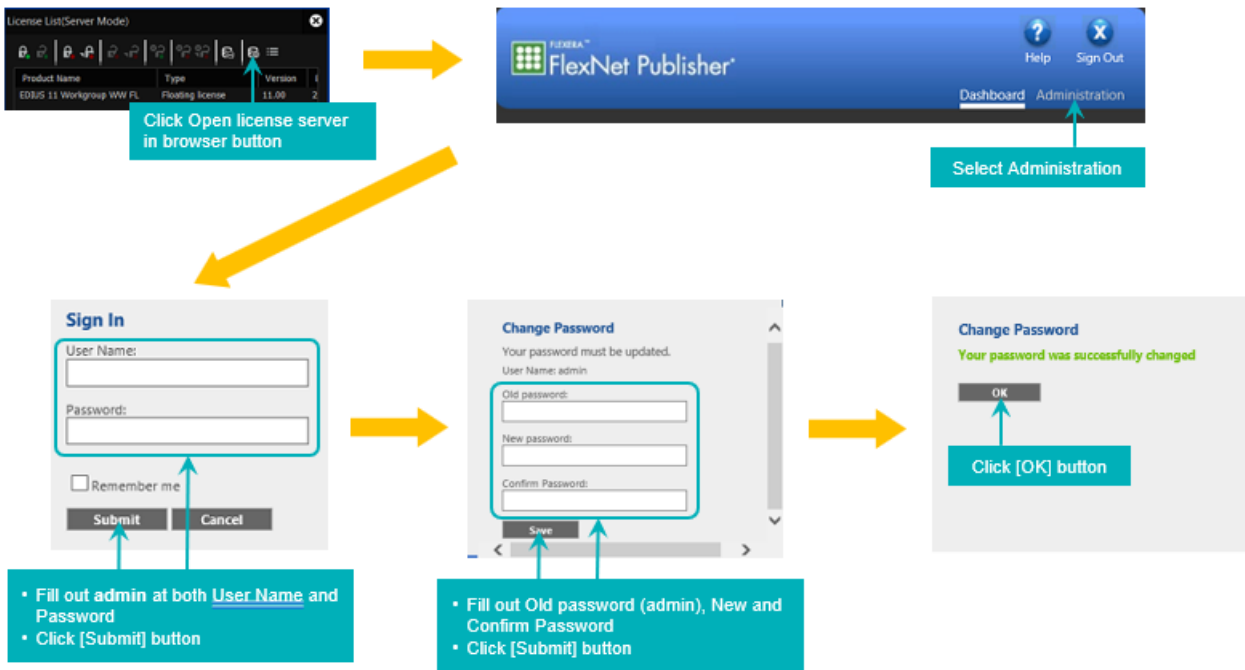
Once starting EDIUS successful, verify concurrent licenses

► [Verify concurrent licenses](#)

Chapter 6 Server administration

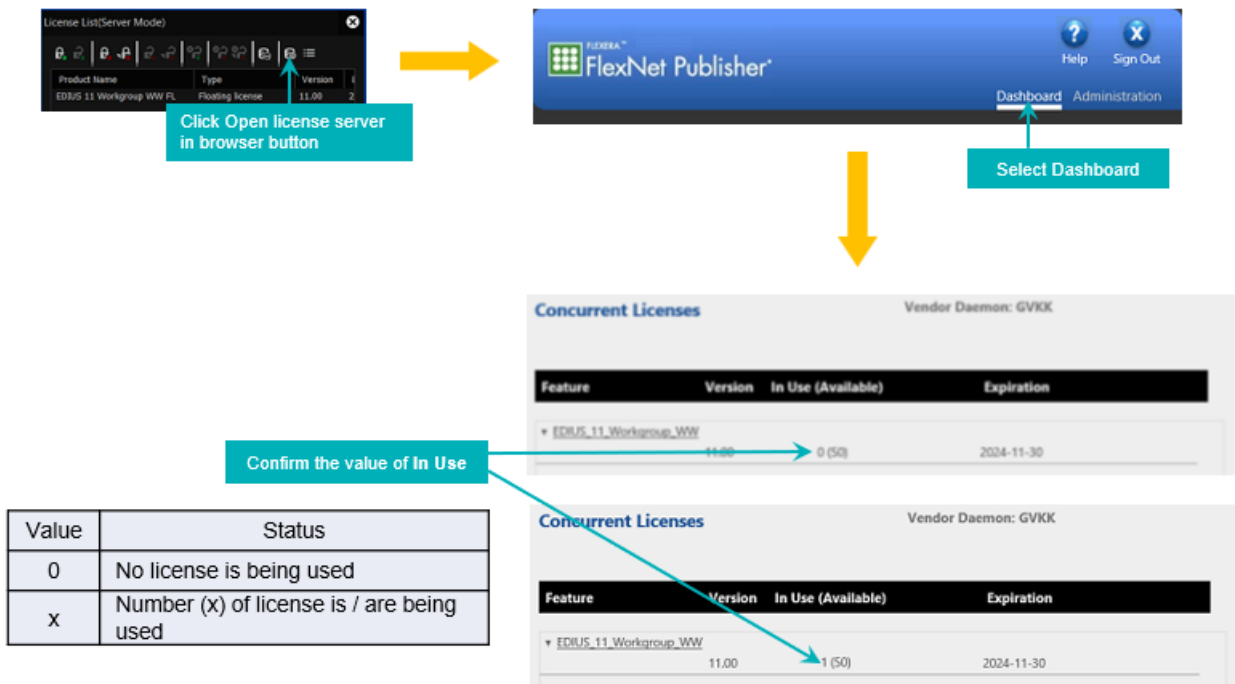
Administrative console sign in

The administrative console can be signed in from the License List user interface. You will be required to change the password when first time sign in.



Verify concurrent licenses

Verify if required licenses also appear in the license server dashboard and value of 'In Use' correctly changes due to starting / quitting EDIUS.



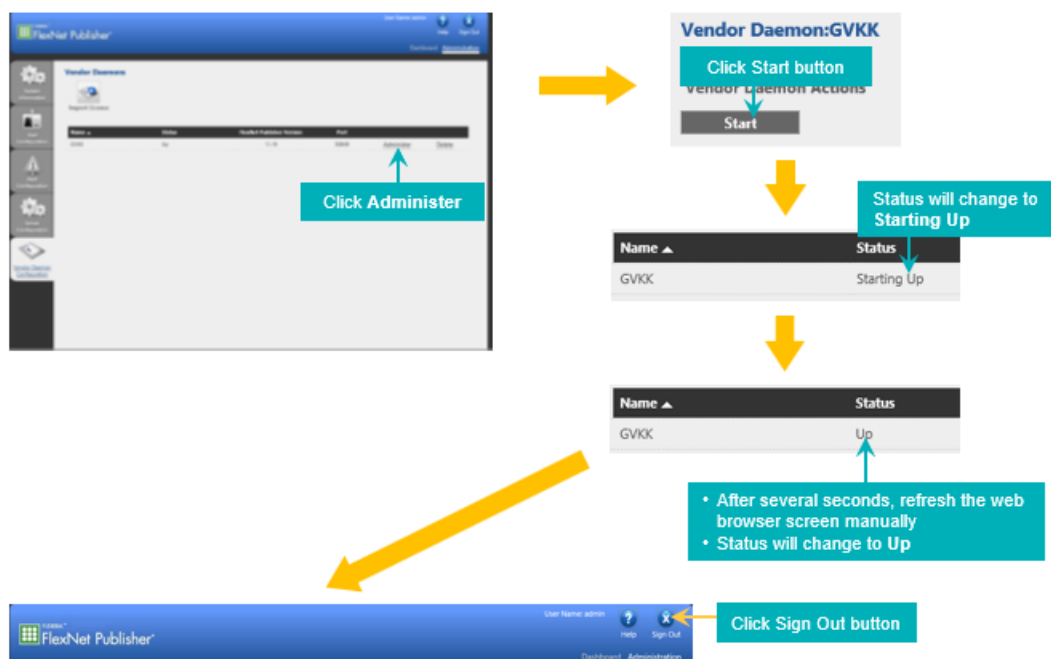
Restart license server modules

You can restart server related modules by following three steps:

1 Stop the modules



2 Restart the modules



3 Restart the service

- 1) Open Task Manager then go to [Services].
- 2) Right-click on **GVLicenseServer** then select [Restart] context menu.

3) Once the service started, restarting server module succeeded.

If restarting the module is not helpful for your trouble, restart the server computer to resolve problem.

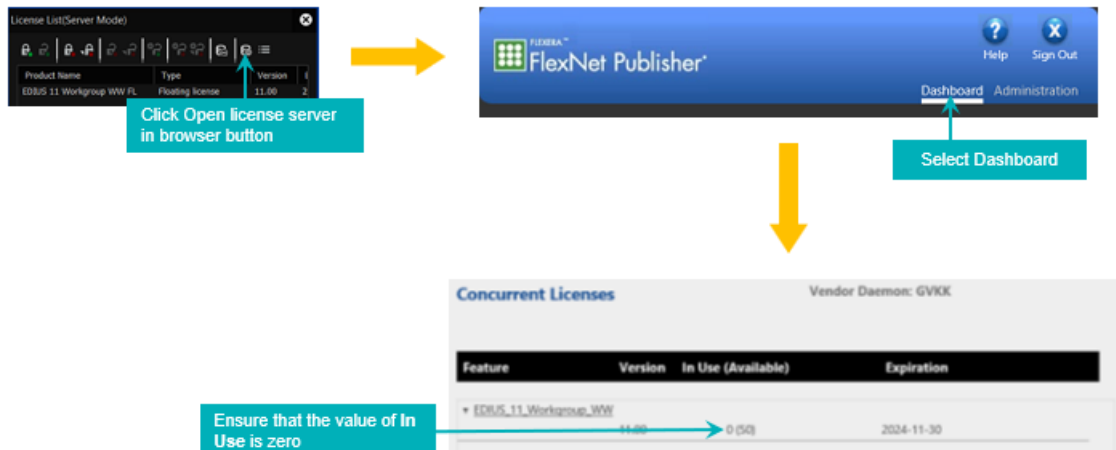
Chapter 7 License deactivation

NOTE

- Before deactivating the license, EDIUS must be exit on all clients
- Floating license system does not allow online deactivation

Exit EDIUS

- 1 Exit EDIUS on each client.
- 2 On the floating license server, follow below steps

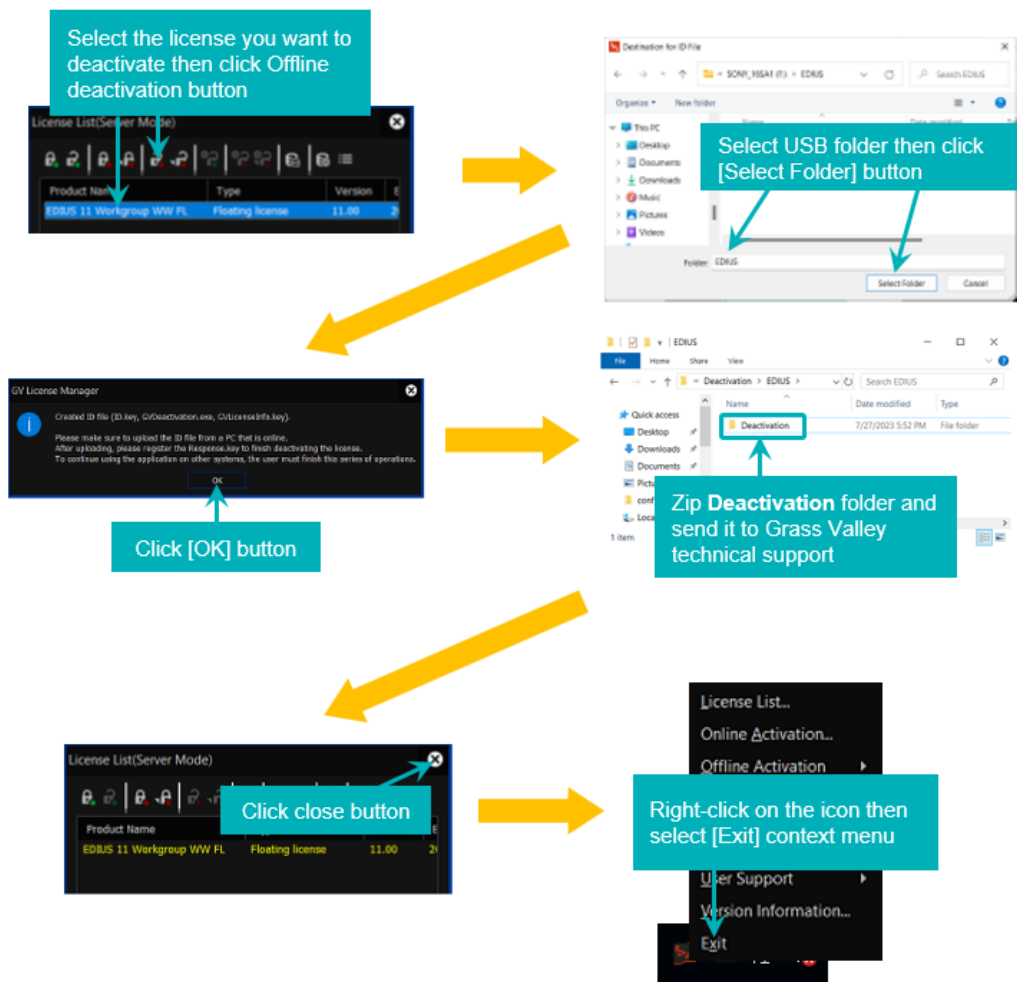


- 3 Sign out from the console by closing web browser.

License deactivation

Follow below two steps to deactivate the floating license:

1 Create deactivation zip file



Go to #2 to delete registered license item from the list.

2 Delete the license item from the license list

Right-click on the icon then select [License List] context menu

Right-click on the license (yellow character).
Select [Delete] context menu.
Click Close button.

- Whilst pressing Ctrl + Shift key and select **Start > Grass Valley > GV License Manager (Server Mode)**
- Once GV License Manager icon appeared, release pressed keys.

Product Name	Type	Version	Expiration
EDIUS 11 Wor...	Floating		

Chapter 8 Troubleshooting

An error occurs while starting EDIUS

If “Check the status of the network and remaining number of licenses on the server” appears while starting EDIUS, confirm number of the remaining copies.

Check remaining floating license copy



Confirm running of required services

Ensure that required services for running of floating license system including GV License Manager.

- 1 Start Task Manager then go to [Services].
- 2 Confirm if both FlexNet Licensing Service 64 and GVLICENSESERVER have 'Running' status. If not, right-click on each of them and Select Start. If they have 'Running', Select 'Restart' context menu.
- 3 Confirm if GV License Manager is running in the server then start EDIUS client application.

Several functions disabled in EDIUS

Connection to floating license server must be kept while using EDIUS. If disconnected more than 15 minutes, following functions will disable in EDIUS.

- Print to file
- Print to tape
- Batch export
- Burn to Disc
- Launch Quick Titler

If the functions disabled, try below troubleshooting.

Restart GV License Manager on EDIUS client

- 1 Save project then exit EDIUS.
- 2 Open GV License Manager (select [Exit] context menu) from the notification tray at the bottom right of the desktop of the workstation.
- 3 Select **Start > Grass Valley > GV License Manager**.
- 4 Start EDIUS.

Restart floating license server

Try to restart the floating license server computer.

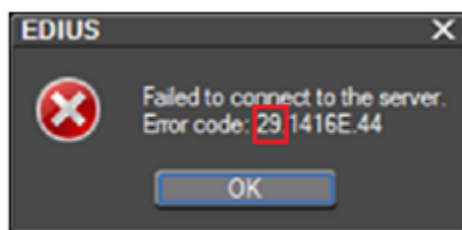
If both troubleshooting are not helpful, try below narrow down then contact to Grass Valley technical support along with your troubleshooting and narrow down result.

- 1 Confirm if you can open the server console in web browser. To do it, click [Open license server in browser] button in GV License Manager license list.
- 2 Open license server in web browser then confirm if EDIUS client name is listed in 'Hosts' list

Once EDIUS client reconnected to floating license server, disabled functions will be enabled.

An error occurs while license activation / deactivation

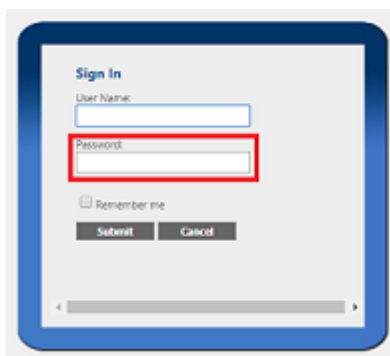
If an error occurs while license activation / deactivation, error code will appear.



Required troubleshooting steps is vary depending on appeared error code. See the [knowledge base](#) more details.

Forgot Flexnet Publisher password

If you forgot the Flexnet Publisher password, modify configuration file to reset the password. Follow below steps on the floating license server.



Preparation

Ensure that EDIUS application has been quit and no render job is queued or ongoing in Render Engine server

Reset the password

- 1 Run Notepad with administrator privileges
- 2 Navigate to **C:\Program Files\Grass Valley\Floating License Server\conf** folder
- 3 Drag and drop **server.xml** file to Notepad
- 4 Search out by typing **<accesscontol** in 'Find' box
- 5 Modify two values

```
<accessControl sessionTimeout="1800">
<user firstName="System" id="admin" lastName="Administrator"
    password="{ENCRYPTEDPASSWORD}"
    passwordExpired="false" privileges="admin" type="local-admin"/>
```

Current value	Changed to
password="{ENCRYPTEDPASSWORD}"	password="admin"
passwordExpired="false"	passwordExpired="true"

- 6 Ensure that modified result is as below


```
<accessControl sessionTimeout="1800">
<user firstName="System" id="admin" lastName="Administrator" password="admin"
    passwordExpired="true" privileges="admin" type="local-admin"/>
```
- 7 Overwrite the file.
- 8 Restart the server.
- 9 Once the server restarted, sign into the administrative console. See [Administrative console sign](#) in more details of required steps for first time sign in.

Fails to initialize the password

If initialized password is rejected, not working of required service is possible cause. Confirm that the required services are running in the Services list.

- FlexNet Licensing Service 64
- GVLICENSESERVER

If they do not have "Running" status, right-click on the service then select [Restart] context menu. If the service does not appear in the list, try to restart the server computer.

Chapter 9 Replace server computer

Follow below steps when you need to replace server computer hardware:

- 1 Exit EDIUS on each client.
- 2 On the server, open GV License Manager then click [Open license server in browser] button.
- 3 Server console will open in web browser. Confirm if number of **In Use** is zero.
- 4 Exit server console.
- 5 Deactivate floating license in the server computer then close the license list.
* See [Chapter 7 License deactivation](#) more details.
- 6 From Apps & features, uninstall GV Floating License Server program.
- 7 After replacing computer hardware, build EDIUS floating license server.

APPENDIX

What version of the floating license am I using?

- 1 Navigate to **C:\Program Files\Grass Valley\GV License Manager**.
- 2 Right-click on **SvrMaintainer.exe** then select [Properties] context menu.
- 3 Go to [Details].
- 4 Confirm 'Product version' value.
- 5 Click [OK] button to close the properties.

NOTE

- Its version has to be the same (or upper) as EDIUS 11.
- [Version Info...] context menu does not show build number. Take above steps to identify the build number.

Create system report file

Grass Valley may ask providing system report file to review license issue that may occur on the floating license server. In this case, follow below steps:

- 1 Open GV License Manager (select [User Support] > [Create System Report...] context menu) from the notification tray at the bottom right of the desktop of the workstation.
- 2 'Save' dialog will appear. Select the destination then click [Save].
- 3 System report .zip file will be saved. Once completed, click [OK] button to close the message.
- 4 Send it to Grass Valley technical support.

Configure Microsoft Edge browser to use administrative console

If you want to use Microsoft Edge for running of administrative console, activate Internet Explorer mode.

Prerequisite

Ensure that 'Use TLS 1.2' is being activated in Internet Properties – details [here](#)

Activate Internet Explorer mode

- 1 Run Microsoft Edge then press Alt + F key and select **Settings**.
- 2 In the left-pane, select **Default browser**.
- 3 In **Allow sites to be reloaded in Internet Explorer mode (IE mode)**, select [Allow] . If [Restart] appears, click it.
- 4 Click [Add] button.
- 5 In the box, type `http://localhost:8090/` then click [Add] button.
- 6 Close settings.
- 7 Confirm if you can open administrative console from GV License Manager.